

Career Profile: Rail Infrastructure



Rail infrastructure workers install, maintain and repair rail and tram tracks, signals and associated bridges and tunnels for passenger trains, freight trains, light rail and trams. They may also work on tracks used in quarries and by the mining industry.

Qualification

Certificate III in Rail Infrastructure

Sector

Civil / Resources

What might a working day look like? May perform tasks including:

As a rail infrastructure worker, you would:

- ▶ Lay and fix the foundations and sleepers for tracks
- ▶ Cut rails to length and install railway switches
- ▶ Repair and maintain worn or rough rail ends
- ▶ Remove and replace damaged track
- ▶ Operate a two-way radio
- ▶ Examine and maintain switch signal lamps and the wheel bearings of rolling stock
- ▶ Use a range of tools and equipment including welding, industrial bolting equipment and large industrial machinery

Working Hours

- ▶ Full-time hours per week
- ▶ Shiftwork including nights
- ▶ Weekends and public holidays

Conditions

- ▶ Work outside in most weather conditions
- ▶ Inside tunnels, mines and other enclosed spaces
- ▶ Train depots and rail yards

Skills and personal qualities

- ▶ Reasonable level of physical fitness
- ▶ Problem solving skills and enjoy practical work
- ▶ Good hand-eye coordination
- ▶ Always safety conscious
- ▶ Time management, reading and writing skills
- ▶ Willing to work outside in most weather conditions, inside tunnels, mines and other enclosed spaces.

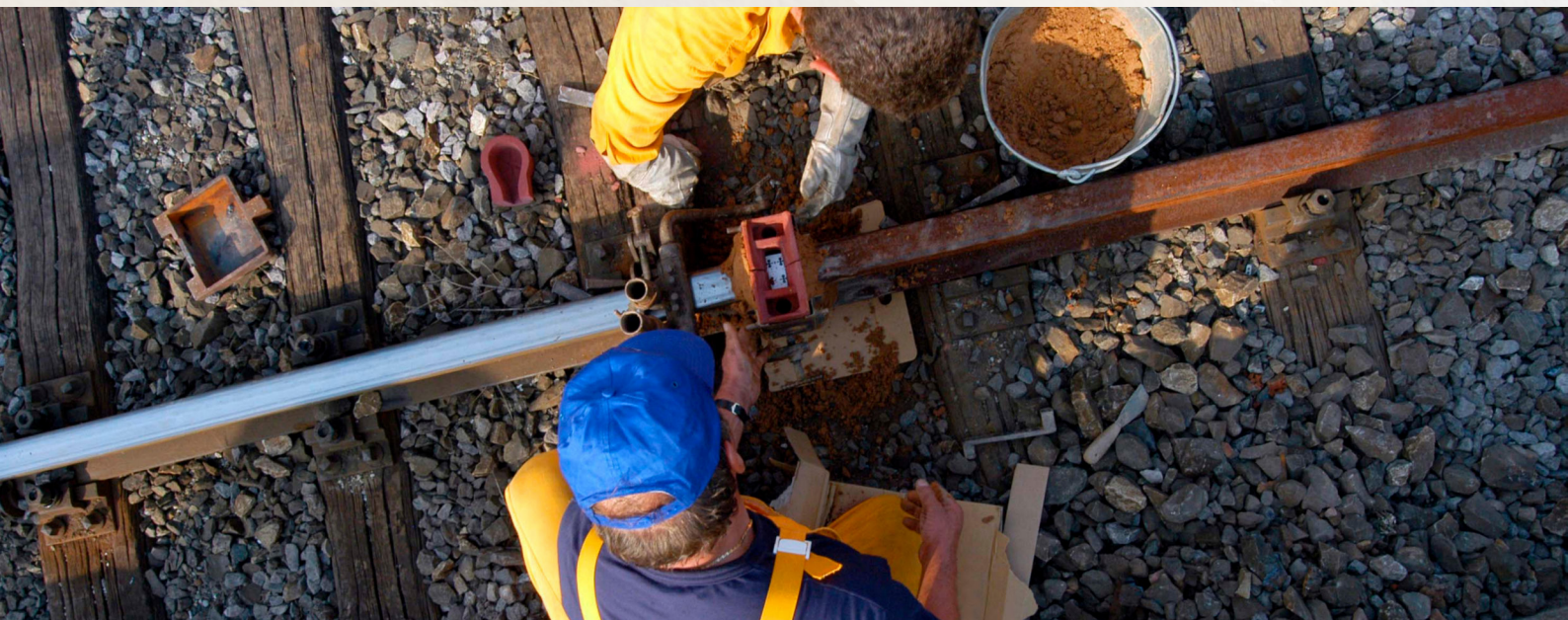
How to get started

Entry to this occupation is by completing a Certificate II in Rail Infrastructure as an entry level qualification leading into a Certificate III in rail infrastructure apprenticeship.

Future Pathways and opportunities

Rail Infrastructure workers do not tend to transition into "Above Rail" roles such as train drivers. They would likely move into roles from the Cert III Rail Infrastructure such as:

- ▶ Track Maintenance and Construction
- ▶ specialist track installer
- ▶ track examiner
- ▶ light rail track worker.



Next Steps

Further information can be found at:

- ▶ Jobs and Skills WA – www.jobsandskills.wa.gov.au
- ▶ Job Outlook – www.joboutlook.gov.au
- ▶ The Good Universities Guide – www.gooduniversitiesguide.com.au
- ▶ Engineers Australia – www.engineersaustralia.org.au/



GOVERNMENT OF
WESTERN AUSTRALIA