

CONSTRUCTION FUTURES CENTRE

Excursion Information

The Construction Futures Centre caters for audiences from Year 9 through to Year 12 and is an interactive venue with a range of exhibits that highlight the careers available in Western Australia's building and construction industry and demonstrates the industry's significance to the economic and social wellbeing of the State.

Visits to the Construction Futures Centre can be tailored to suit age groups and subject requirements and presents a range of learning experiences that support the Australian Curriculum, particularly in STEM areas. Entry into the Construction Futures Centre is free.

The Construction Futures Centre is not open to the public and only single bookings of up to 40 students. Students are not permitted to leave the building during the excursion.



Supervision

It is a requirement that schools provide a supervisory team for excursions to the Construction Futures Centre. The preferred ratio is 1:10 for Years 9 -10 and 1:15 Year 11-12. The school supervisors must accompany students throughout the excursion, actively monitor behaviour and intervene as necessary.

Construction Futures Centre facilitators will direct and assist students throughout the excursion; however, will not assume responsibility for student management or supervision. We may be required to intervene where behaviour or activity presents a risk to the safety of individuals and/or the integrity of exhibits.

Transport/Parking

Transport and transport costs to and from the Construction Futures Centre is the responsibility of the visiting school. Buses can enter via the Belgravia Street entrance and park in bus port on right hand side of the building at the centre entrance.

Buses can remain parked in the undercover area during the excursion or depart via the Hubert Street exit.

Student Learning Materials

We have a range of learning activities available on our website [here](#) to be used before, during and after the excursion.



CONSTRUCTION FUTURES CENTRE

Environment/Accessibility

The Construction Futures Centre is located at 104 Belgravia Street, Belmont and comprises two floors of exhibit space with stairs and elevator available. The theatre includes a hearing loop. Toilets (including accessible toilet) are on the ground floor of the exhibition space. A first-aid facility is available.

There are no facilities for students to purchase and/or eat food on the premises.

Emergency Response Plan

The Construction Futures Centre has an Emergency Response Plan which includes trained wardens, evacuation maps and routes, clearly marked exits and fire hydrant equipment. In the event of an emergency, it is essential that all school visitors take directions from facilitators who will manage evacuation of the building and direct students and supervisors to assemble at a safe muster point.

Supervisors will need to do a roll call and must immediately notify facilitators if any students are missing. It is recommended that supervisory teams have access to a list of names of participating students, supervisors' contact telephone numbers, student medical information and relevant health information of supervisors.

Facilitators have first aid training; however, it is the responsibility of the excursion supervisors to administer basic first aid to the students.

Public Liability Insurance


The Construction Futures Centre is insured by RiskCover. The limit of cover is \$800,000,000. The Certificate of Currency is included at the end of this document.


Construction Futures Centre Facilitators

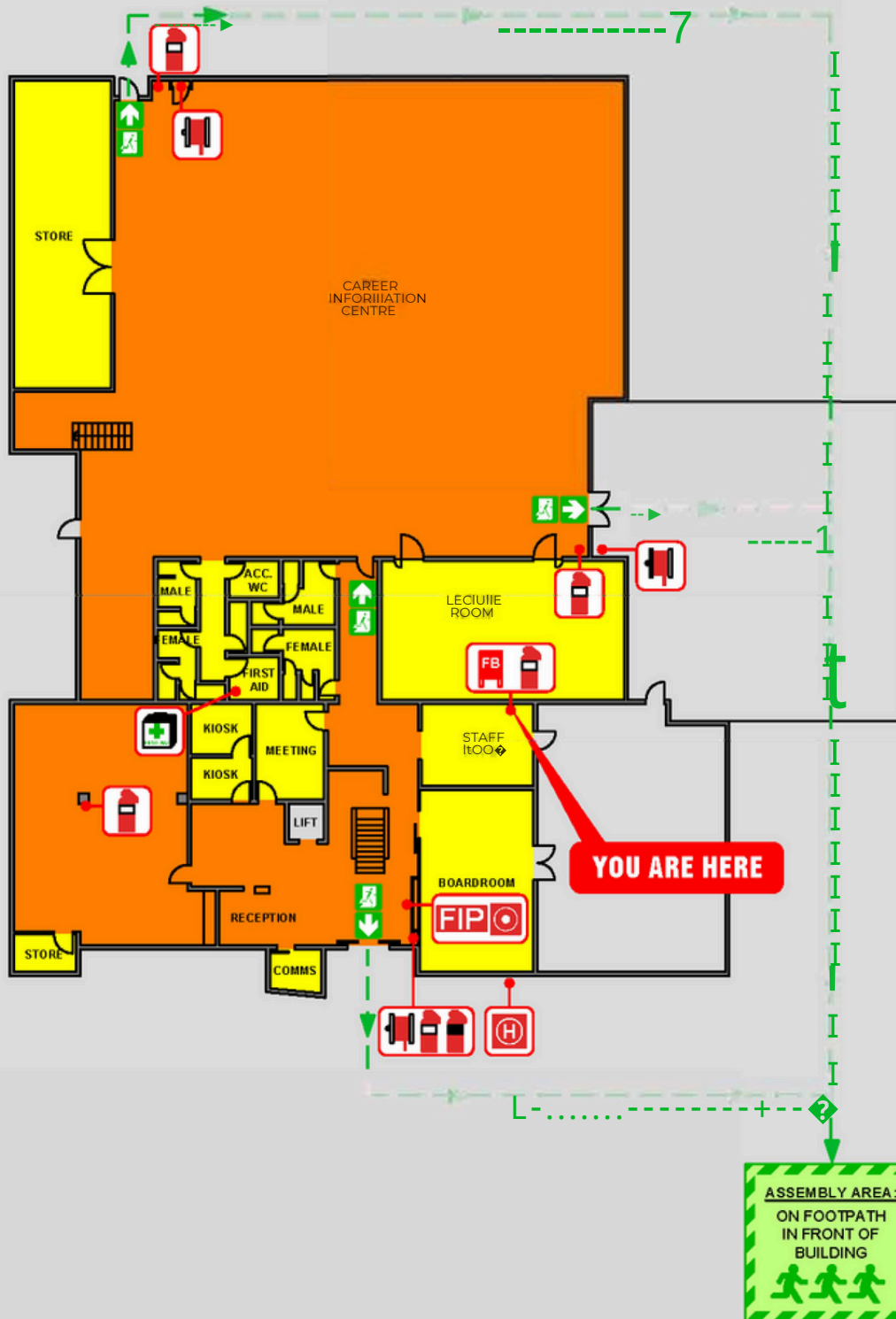
- Have current Working with Children and National Police clearances.
- Experienced presenters with appropriate qualifications and experience
- Hold current first-aid certification



 cfc@ctf.wa.gov.au

 (08) 9244 0100 104

 Belgravia Street,
Belmont WA 6104



EMERGENCY INFORMATION IN THE EVENT OF SMOKE, FIRE OR FIRE PANEL ALARM TONE

- Cease all activities and move to nearest safe exit and evacuate to the Assembly Area.
- Report to the Warden at the Muster Point.
- If directed to cross roads, watch traffic and take care.
- Report any missing persons to the Chief Warden.
- Wait for the "ALL CLEAR" from the Chief Warden before re-entering the building.

DIAL -000 EMERGENCY SERVICES

LEGEND:

- | | |
|--------------------------------|------------------|
| Fire Hose Reel | Muster Location |
| Dry Chemical Fire Extinguisher | External Egress |
| CO2 Extinguisher | Point of Meeting |
| Fire Hydrant | Emergency Exit |
| Fire Blanket | First Aid Kit |
| Fire Indicator Panel | Main Telephone |

SITE PLAN ASSEMBLY AREA LOCATION





EMERGENCY INFORMATION IN THE EVENT OF SMOKE, FIRE OR FIRE PANEL ALARM TONE

- Cease all activities and move to nearest safe exit and evacuate to the Assembly Area.
- Report to the Warden at the Muster Point.
- If directed to cross roads, watch traffic and take care.
- Report any missing persons to Chief Fire Warden.
- Wait for the "ALL CLEAR" from the Chief Warden before re-entering the building.

DIAL - 000 EMERGENCY SERVICES

LEGEND:

- | | | | |
|--|----------------------------------|--|-----------------|
| | Fire Hose Reel | | Muster Location |
| | Dry Chemical Powder Extinguisher | | External Egress |
| | CO ² Extinguisher | | Path of travel |
| | Defibrillator | | Emergency Exit |
| | Fire Blanket | | First Aid Kit |

SITE PLAN - ASSEMBLY AREA LOCATION:



CERTIFICATE OF CURRENCY

RiskCover

This Certificate is issued for information purposes only and does not confer any rights upon the Certificate holder and does not amend, extend or alter the coverage provided by the Cover detailed below.

Public Authority: Building and Construction Industry Training Fund Board

Cover Number: R/207072

Cover: General Liability (including Products Liability).

Situation of Risk: Worldwide

Covering: The legal liability of the Public Authority in respect of claims for compensation resulting from an occurrence.

Limit of Liability: \$800 million any one occurrence.

Excess: Nil

Expiry Date: 30 June 2026

Conditions: Subject to the RiskCover Certificate of Cover, Cover Document and Fund Guidelines.

This Cover has been effected with RiskCover (managed by the Insurance Commission of Western Australia).

Date Issued: 4 July 2025



**Insurance Commission
of Western Australia**